

SINLOON®

貼片型穩壓二極管

Voltage Range: 6.2V - 100V

1SMA4735A-1SMA4764A

1W Surface Mount Zener Diode

Feature

- ◆ Glass Passivated Die Construction
- ◆ 1W Power Dissipation
- ◆ 6.2V - 100V Nominal Zener Voltage
- ◆ ±5% Standard Vz Tolerance
- ◆ Low Inductance
- ◆ Typical I_r Less Than 0.5uA above 11V
- ◆ Plastic Case Material has UL Flammability Classification Rating 94V-0

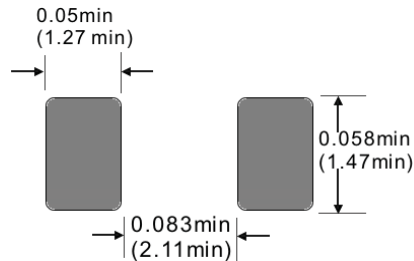
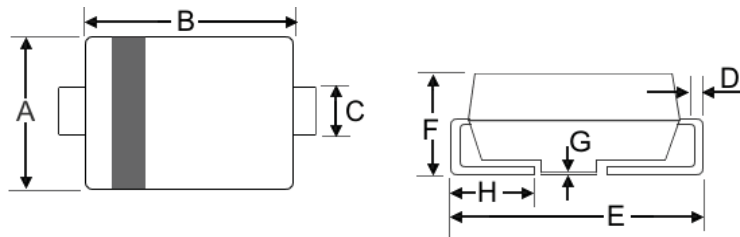
Mechanical Data

- ◆ Case: SMA/DO-214AC, Moldes Plastic
- ◆ Terminals: Solder Plated, Solderable per MIL-STD-750, Method 2026.
- ◆ Polarity: Cathode Band
- ◆ Weight: 0.064 grams (approx)
- ◆ Marking: Device Marking Code
- ◆ Lead Free: For RoHS / Lead Free Version Add "-LF" Suffix to part Number.

Dimension

Case: SMA/DO-214AC (mm)

Dim	Min	Max
A	2.5	2.9
B	4.0	4.6
C	1.2	1.6
D	0.152	0.305
E	4.8	5.28
F	2.0	2.44
G	0.051	0.203
H	0.76	1.52



Unit: inches(mm)

Recommended Footprint

Marking Information

- Cathode = Polarity Band
- Body Top = Device Marking Code Number
- Polarity = As Marked Body



Maximum Ratings and Electrical Characteristics @T_A=25°C unless otherwise specified

CHARACTERISTIC	Symbol	Value	Unit
DC Power Dissipation at T _L = 50°C (Note ¹)	P _d	1.0	W
Forward Voltage @I _F = 200mA	V _F	1.2	V
Thermal Resistance Junction to Ambient (Noté ¹)	R _{θJA}	170	°C/W
Operating and Storage Temperature Range	T _J , T _{STG.}	-65~+150	°C

Note: ¹. Mounted on FR-4 board with 8.0mm² copper pad

Figure Case SMA/DO-214AC



SINLOON®

貼片型穩壓二極管

Voltage Range: 6.2V - 100V

1SMA4735A-1SMA4764A

1W Surface Mount Zener Diode

□ **Maximum Ratings and Electrical Characteristics** @ $T_A=25^{\circ}\text{C}$ unless otherwise specified

Type Number (Note ¹)	Device Marking Code	Nominal Zener	Test Current	Maximum Zener Impedance (Note ³)			Leakage Current		Max. DC Zener Current
		$V_Z @ I_{ZT}$	I_{ZT}	$Z_{ZT} @ I_{ZT}$	$Z_{ZK} @ I_{ZK}$	I_{ZK}	I_R	@ V_R	I_{ZM}
		(V) $\pm 5\%$	(mA)	(Ω)	(Ω)	(mA)	(μA)	(V)	(mA)
1SMA4735A	35A	6.2	41.0	2.0	700	1.0	10	3.0	730
1SMA4736A	36A	6.8	37.0	3.5	700	1.0	10	4.0	660
1SMA4737A	37A	7.5	34.0	4.0	700	0.5	10	5.0	605
1SMA4738A	38A	8.2	31.0	4.5	700	0.5	10	6.0	550
1SMA4739A	39A	9.1	28.0	5.0	700	0.5	10	7.0	500
1SMA4740A	40A	10	25.0	7.0	700	0.25	10	7.6	454
1SMA4741A	41A	11	23.0	8.0	700	0.25	5.0	8.4	414
1SMA4742A	42A	12	21.0	9.0	700	0.25	5.0	9.1	380
1SMA4743A	43A	13	19.0	10.0	700	0.25	5.0	9.9	344
1SMA4744A	44A	15	17.0	14.0	700	0.25	5.0	11.4	305
1SMA4745A	45A	16	15.5	16.0	700	0.25	5.0	12.2	285
1SMA4746A	46A	18	14.0	20.0	750	0.25	5.0	13.7	250
1SMA4747A	47A	20	12.5	22.0	750	0.25	5.0	15.2	225
1SMA4748A	48A	22	11.5	23.0	750	0.25	5.0	16.7	205
1SMA4749A	49A	24	10.5	25.0	750	0.25	5.0	18.2	190
1SMA4750A	50A	27	9.5	35.0	750	0.25	5.0	20.6	170
1SMA4751A	51A	30	8.5	40.0	1000	0.25	5.0	22.8	150
1SMA4752A	52A	33	7.5	45.0	1000	0.25	5.0	25.1	135
1SMA4753A	53A	36	7.0	50.0	1000	0.25	5.0	27.4	125
1SMA4754A	54A	39	6.5	60.0	1000	0.25	5.0	29.7	115
1SMA4755A	55A	43	6.0	70.0	1500	0.25	5.0	32.7	110
1SMA4756A	56A	47	5.5	80.0	1500	0.25	5.0	35.8	95
1SMA4757A	57A	51	5.0	95.0	1500	0.25	5.0	38.8	90
1SMA4758A	58A	56	4.5	110.0	2000	0.25	5.0	42.6	80
1SMA4759A	59A	62	4.0	125.0	2000	0.25	5.0	47.1	70
1SMA4760A	60A	68	3.7	150.0	2000	0.25	5.0	51.7	65
1SMA4761A	61A	75	3.3	175.0	2000	0.25	5.0	56.0	60
1SMA4762A	62A	82	3.0	200.0	3000	0.25	5.0	62.2	55
1SMA4763A	63A	91	2.8	250.0	3000	0.25	5.0	69.2	50
1SMA4764A	64A	100	2.5	350.0	3000	0.25	5.0	76.0	45

Note:

¹. Type numbers listed have standard tolerance on the nominal zener voltage of $\pm 5\%$

². Measured under thermal equilibrium and DC (I_{ZT}) test condition.

³. The zener impedance is derived from the 60Hz AC voltage which results when an AC current having an RMS value equal to 10% of the Zener current (I_{ZT} or I_{ZK}) is superimposed on I_{ZT} or I_{ZK} . Zener impedance is measured at two points to insure a sharp knee on the breakdown curve and to eliminate unstable units.

SINLOON®



品質承諾標誌
QUALITY COMMITMENT

SINLOON®

貼片型穩壓二極管
Voltage Range: 6.2V - 100V

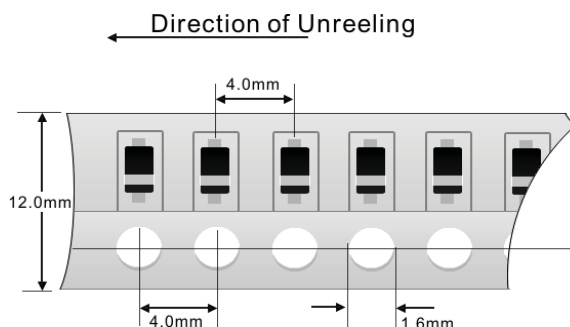
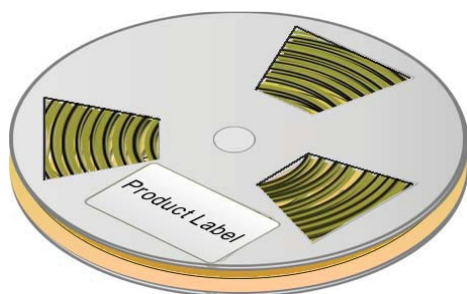
1SMA4735A-1SMA4764A
1W Surface Mount Zener Diode

Packaging Information

Dimension Reel Tape	Quantity (Pcs)	Inner Box Size L x W x H	Quantity (Pcs)	Carton Size L x W x H	Quantity (Pcs)	Gross Weight
330 mm	7,500	340 x 337 x 45 mm	15,000	370 x 370 x 420 mm	120,000	17.5kg

Note: 1. Paper Reel, White or gray color.
2. Components are packed in accordance with EIA standard 481- and 481-2

Tape Reel 330 x 12mm



Carton:



SINLOON®

※美隆公司產品規格及其特性參數的改變或更新恕不另行通知。
※Mayloon characteristic parameters of electronic product specification changes or updates without notice to improve

