

SINLOON®

肖特基二極管
Case: ITO-220

SB10150FCT - SB10200FCT
10A High Voltage Dual Schottky Barrier Rectifier

Feature

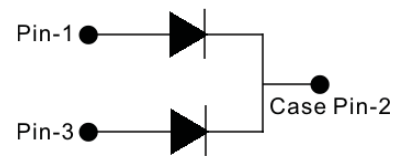
- ◆ Schottky Barrier Chip
- ◆ Guard Ring for Transient Protection
- ◆ Low Forward Voltage Drop
- ◆ Low Reverse Leakage Current
- ◆ High Surge Current Capability
- ◆ Plastic Material has UL Flammability Classification 94V-0

Figure



Mechanical Data

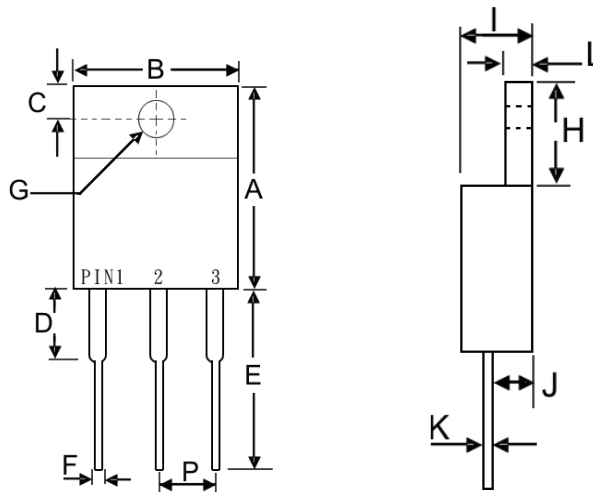
- ◆ Case: ITO-220, Full Moldes Plastic
- ◆ Terminals: Plated Leads Solderable per MIL-STD-202, Method 208
- ◆ Polarity: See Diagram
- ◆ Weight: 2.24 grams (approx)
- ◆ Mounting Position: Any
- ◆ Mounting Torque: 11.5 cm-kg (10 in-lbs) max.
- ◆ Lead Free: For **RoHS** / Lead Free Version Add "-LF" Suffix to part Number.



Dimension

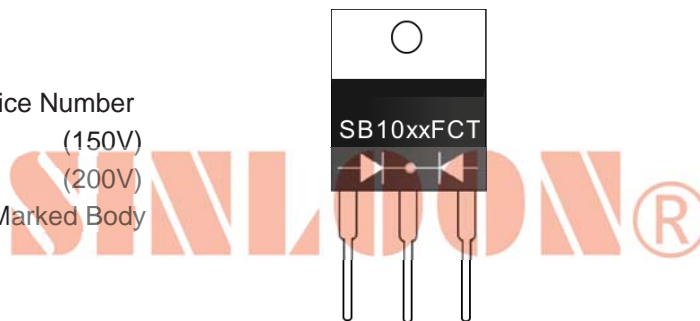
Case: ITO-220 (mm)

Dim.	Min.	Max.
A	14.6	15.4
B	9.7	10.3
C	2.55	2.85
D	2.7	3.3
E	13.0	13.8
F	0.5	0.75
G (Φ)	3.0	3.5
H	6.3	6.9
I	4.2	4.8
J	2.5	2.9
K	0.5	0.75
L	2.7	3.15
P	2.29	2.79



Marking Information

SB10xxFCT = Device Number
 xx = 150 (150V)
 = 200 (200V)
 Polarity = As Marked Body



Maximum Ratings and Electrical Characteristics @ $T_A=25^\circ\text{C}$ unless otherwise specified

Single Phase, half wave, 60Hz, resistive or inductive load For capacitive load, derate current by 20%.

Characteristics	Symbol	SB 10150FCT	SB 10200FCT	Unit
Peak Repetitive Reverse Voltage	V_{RRM}			
Working Peak Reverse Voltage	V_{RWM}	150	200	V
DC Blocking Voltage	V_R			
RMS Reverse Voltage	$V_{R(RMS)}$	105	140	V
Average Rectified Output Current @ $T_C=95^\circ\text{C}$	I_O	10	10	A
Non-Repetitive Peak Forward Surge Current 8.3ms Single half sine-wave superimposed on rated load (JEDEC Method)	I_{FSM}	150	150	A
Forward Voltage @ $I_F=5.0\text{A}$	V_{FM}	0.92	0.92	V
Peak Reverse Current @ $T_A = 25^\circ\text{C}$ At Rated DC Blocking Vol. @ $T_A=100^\circ\text{C}$	I_{RM}	0.5 50		mA
Typical Junction Capacitance (Note 1)	C_j	700		pF
Operating and Storage Temperature Range	T_j, T_{STG}	-65 to +150		$^\circ\text{C}$

Note 1: Measured at 1.0 MHz and applied reverse voltage of 4.0V D.C.

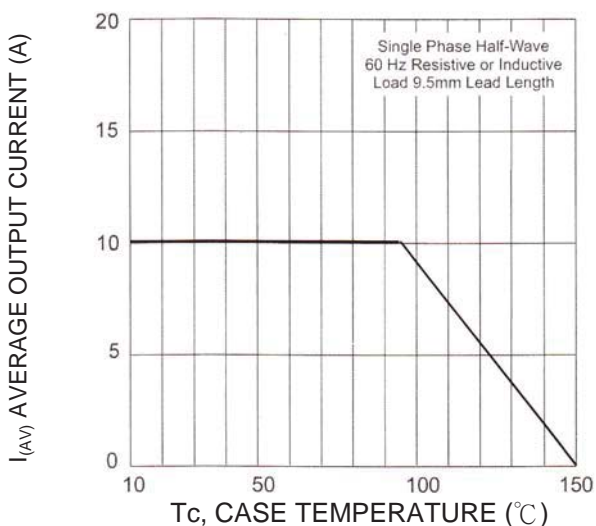
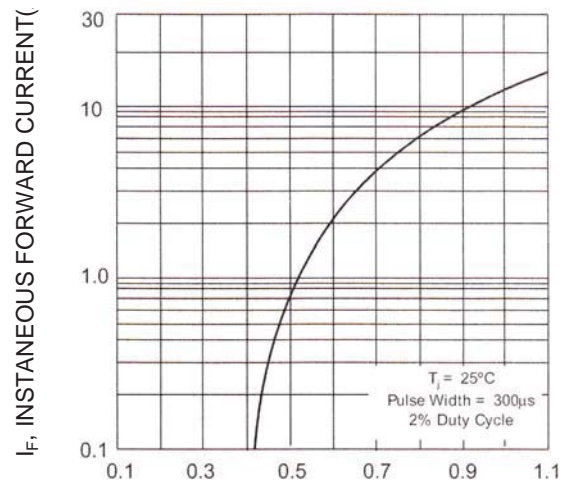


Fig-1 Forward and Current Derating Curve



V_F , INSTANTANEOUS FORWARD VOLTAGE (V)

Fig-2 Typical Forward Voltage Characteristics

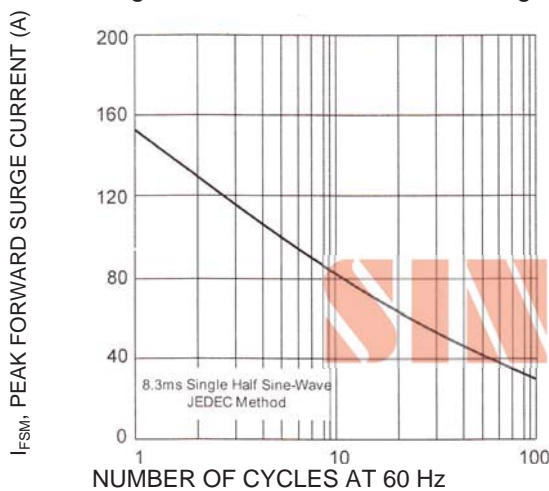
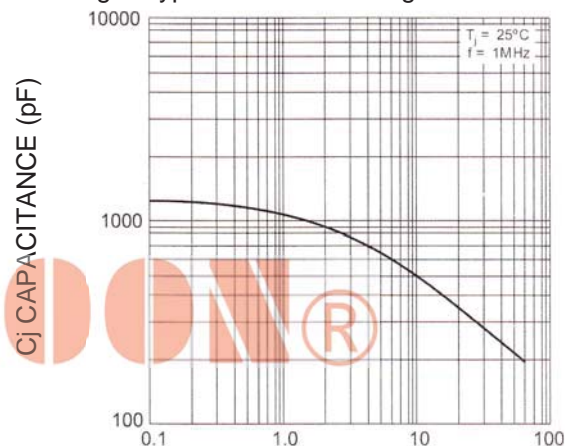


Fig-3 Peak Forward Surge Current



V_R , REVERSE VOLTAGE (V)

Fig-4 Typical Junction Capacitance



SINLOON®

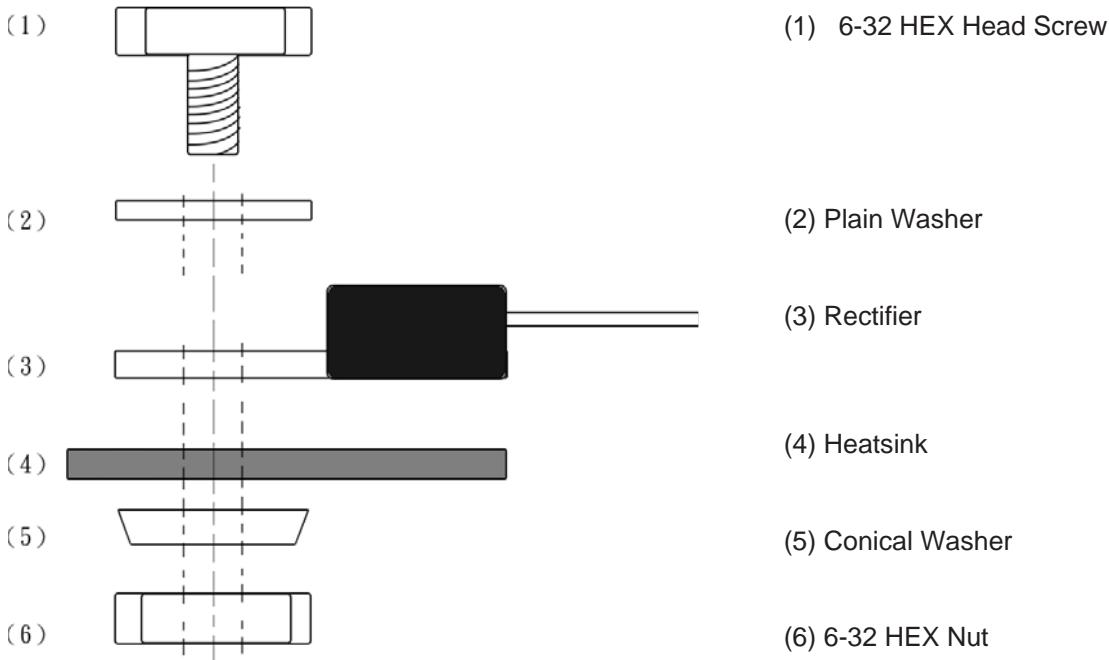
肖特基二極管
Case: ITO-220

SB10150FCT - SB10200FCT
10A High Voltage Dual Schottky Barrier Rectifier

Packaging Information

Tube Size LxWxH (mm)	Quantity (Pcs)	Inner Box Size LxWxH (mm)	Quantity (Pcs)	Carton Size LxWxH (mm)	Quantity (Pcs)	Gross Weight
525 x 31 x 6	50	555x145x95	2000	572x306x218	8000	19.0kg

Recommend Screw Mount Arrangement



◆ The full molded plastic package affords a major reduction of hardware as compared to a standard TO-220 package. However, precaution should be made in mounting procedure.

◆ A conical washer should be used to apply proper force to the device. Screw should not be tightened with any type of air-forced torque or equipment that may cause crack on device package.

◆ A layer of thermal grease or thermal pad in the interface will be considerably helpful for heat dissipation.

SINLOON®

※美隆公司產品規格及其特性參數的改變或更新恕不另行通知。

※Mayloon characteristic parameters of electronic product specification changes or updates without notice to improve.

