



小型繞線壓模式貼片電感
Range: 10nH ~ 33 μH

TYPE: NL252018 Series
SMD Wirewound Chip Molded Inductor

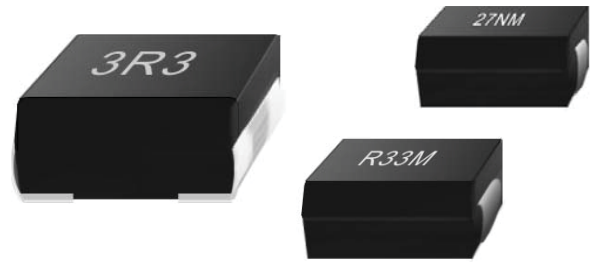
Feature (特性)

- ◆ High resistance to heat and humidity.
(高抗熱及濕度)
- ◆ Resistant to mechanical shocks and pressures.
(對於機械衝擊或壓力有良好之抵抗力)

Application (用途)

Notebook Computer, Disc Drive Unit(CD/DVD),
Inkjet Printer, Hard Disk Drive, Copying Machine,
Display Monitor, Gaming Machine, Color TV,
Video Tape Recorder, DVD Player, Video Camera,
Digital Still Camera, Car Electronics, Lowest EMI.

Figure:



(筆記型電腦、磁片驅動裝置、噴墨印表機、硬碟磁碟機、
影印機、顯示監視器、遊戲機、彩色電視、錄放影機、
光碟機、攝影機、數位相機、汽車電子產品、防干擾對策)

ORDERING INFORMATION

Example: NL252018-10NM01

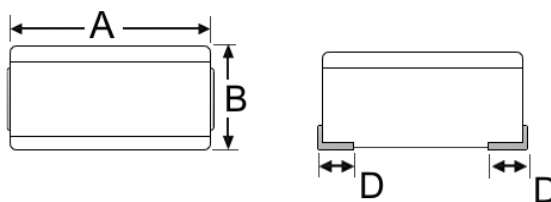
Type	Size	Inductance	Tolerance		Packing
NL252018-01	2.5x2.0x1.8	Ref.	H= ±3%	A=±0.1nH	T=Taping
NL252018-02	2.5x2.0x1.8		J= ±5%	B=±0.2nH	B=Bulk
NL322522	3.2x2.5x2.2		K= ±10%	C=±0.3nH	
NL453232	4.5x3.2x3.2		M= ±20%		
NL565050	5.6x5.0x4.0				

DIMENSION

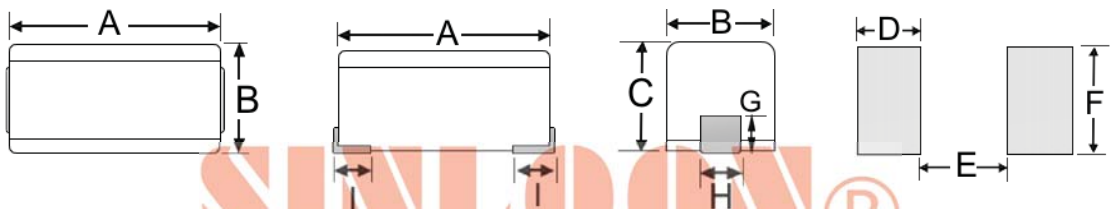
Unit: in mm

Type	A	B	C	D	E	F	G	H	I
NL252018-01	2.5±0.3	2.0±0.2	1.8±0.2	0.3(min)	1.4±0.1	1.5	1.0	1.5	---
NL252018-02	2.5±0.3	2.0±0.2	1.8±0.2	0.3(min)	1.4±0.1	1.5	1.0	1.5	---
NL322522	3.2±0.3	2.5±0.2	2.2±0.2	0.6(Ref.)	1.0(Ref.)	1.5	1.0	1.8	---
NL453232	4.5±0.3	3.2±0.2	3.2±0.2	1.0(Ref.)	1.2(Ref.)	1.6	1.5	2.2	---
NL565050	5.6±0.3	5.0±0.3	4.0±0.3	2.0	4.0	4.5	1.1	4.0±0.2	0.7±0.1

NL252018-01
NL252018-02
NL322522
NL453232



NL565050



Land Pattern

Inductance Range:

Type	Size	Inductance Range
NL252018-01	2.5x2.0x1.8	10nH ~ 100 nH
NL252018-02	2.5x2.0x1.8	1.0 μH ~ 33 μH
NL322522	3.2x2.5x2.2	0.1 μH ~ 100 μH
NL453232	4.5x3.2x3.2	0.1 μH ~ 1000 μH
NL565050	5.6x5.0x4.0	1.0 μH ~ 10000 μH

Land Pattern



SINLOON®

小型繞線壓模式貼片電感

Range: 10nH ~ 100µH

TYPE: NL252018-01 Series

SMD Wirewound Chip Molded Inductor

□ Standard Electrical Specifications NL252018-01 Series Chip Inductor

Part Number NL-252018-01 產品料號	Inductance (µH) 電感值(L)	Tolerance (%) 誤差(%)	Q (min) 品質因數	Frequency (MHz) 測試頻率	SRF(MHz) (min) 共振頻率	DCR(Ω) (max) 直流阻抗	IDC(mA) (max) 定格電流
NL-252018-10NM01	10 nH	±20%	15	100	2150	0.26	530
NL-252018-12NM01	12nH	±20%	15	100	2050	0.27	500
NL-252018-15NM01	15nH	±20%	15	100	2000	0.29	480
NL-252018-18NM01	18nH	±20%	15	100	1850	0.31	450
NL-252018-22NM01	22nH	±20%	15	100	1650	0.37	420
NL-252018-27NM01	27nH	±20%	15	100	1550	0.40	410
NL-252018-33NM01	33nH	±20%	20	100	1450	0.42	400
NL-252018-39NM01	39nH	±20%	20	100	1350	0.45	380
NL-252018-47NM01	47nH	±20%	20	100	1200	0.50	360
NL-252018-56NM01	56nH	±20%	20	100	1100	0.60	340
NL-252018-68NM01	68nH	±20%	20	100	1050	0.65	320
NL-252018-82NM01	82nH	±20%	20	100	900	0.75	300
NL-252018-R10M01	0.1	±10%	20	100	800	0.80	280
NL-252018-R12K01	0.12	±10%	30	25.2	700	0.30	550
NL-252018-R15K01	0.15	±10%	30	25.2	550	0.35	500
NL-252018-R18K01	0.18	±10%	30	25.2	500	0.40	460
NL-252018-R22K01	0.22	±10%	30	25.2	450	0.50	430
NL-252018-R27K01	0.27	±10%	30	25.2	425	0.55	420
NL-252018-R33K01	0.33	±10%	30	25.2	400	0.6	400
NL-252018-R39K01	0.39	±10%	30	25.2	375	0.65	375
NL-252018-R47K01	0.47	±10%	30	25.2	350	0.68	350
NL-252018-R56K01	0.56	±10%	30	25.2	300	0.75	325
NL-252018-R68K01	0.68	±10%	30	25.2	270	0.85	300
NL-252018-R82K01	0.82	±10%	30	25.2	250	1.00	260
NL-252018-1R0J01	1.0	±5%	30	7.96	220	1.10	245
NL-252018-1R2J01	1.2	±5%	30	7.96	180	1.20	230
NL-252018-1R5J01	1.5	±5%	30	7.96	135	1.30	220
NL-252018-1R8J01	1.8	±5%	30	7.96	100	1.45	210
NL-252018-2R2J01	2.2	±5%	30	7.96	75	1.55	200
NL-252018-2R7J01	2.7	±5%	30	7.96	55	1.70	195
NL-252018-3R3J01	3.3	±5%	30	7.96	48	1.90	185
NL-252018-3R9J01	3.9	±5%	30	7.96	43	2.10	180
NL-252018-4R7J01	4.7	±5%	30	7.96	40	2.30	175
NL-252018-5R6J01	5.6	±5%	25	7.96	36	2.50	170
NL-252018-6R8J01	6.8	±5%	25	7.96	33	2.70	165
NL-252018-8R2J01	8.2	±5%	25	7.96	30	3.05	160
NL-252018-100J01	10	±5%	25	2.52	27	3.50	155
NL-252018-120J01	12	±5%	25	2.52	23	3.80	150
NL-252018-150J01	15	±5%	25	2.52	20	4.40	140
NL-252018-180J01	18	±5%	25	2.52	18	4.80	130
NL-252018-220J01	22	±5%	25	2.52	17	5.50	125
NL-252018-270J01	27	±5%	25	2.52	16	6.30	115
NL-252018-330J01	33	±5%	25	2.52	15	7.10	110
NL-252018-390J01	39	±5%	20	2.52	14	9.50	90
NL-252018-470J01	47	±5%	20	2.52	13	11.10	80
NL-252018-560J01	56	±5%	20	2.52	12	12.10	75
NL-252018-680J01	68	±5%	20	2.52	11	16.60	70
NL-252018-820J01	82	±5%	20	2.52	10	19.00	66
NL-252018-101J01	100	±5%	15	2.52	9	21.00	60

※Operating Temp: -40℃ ~ +125℃

※Inducrance drop = 10% type at IDC



SINLOON®

小型繞線壓模式貼片電感
Range: 1.0 μ H ~ 33 μ H

TYPE: NL252018-02 Series

SMD Wirewound Chip Molded Inductor

Standard Electrical Specifications NL252018-02 Series Chip Inductor

Part Number	Inductance	Tolerance	Q	Frequency	SRF(MHz)	DCR(Ω)	IDC(mA)
NL-252018-02 產品料號	(μ H) 電感值(L)	(%) 誤差(%)	(min) 品質因數	(MHz) 測試頻率	(min) 共振頻率	(max) 直流阻抗	(max) 定格電流
NL-252018-1R0K02	1.0	$\pm 10\%$	20	7.96	170	0.34	475
NL-252018-1R5K02	1.5	$\pm 10\%$	20	7.96	90	0.42	435
NL-252018-2R2K02	2.2	$\pm 10\%$	20	7.96	75	0.50	390
NL-252018-3R3K02	3.3	$\pm 10\%$	20	7.96	55	0.85	340
NL-252018-4R7K02	4.7	$\pm 10\%$	20	7.96	43	1.04	285
NL-252018-6R8K02	6.8	$\pm 10\%$	20	7.96	39	1.25	275
NL-252018-100K02	10	$\pm 10\%$	20	2.52	30	1.69	210
NL-252018-150K02	15	$\pm 10\%$	25	2.52	21	2.40	175
NL-252018-220K02	22	$\pm 10\%$	25	2.52	18	3.00	160
NL-252018-330K02	33	$\pm 10\%$	25	2.52	16	5.50	120

※Operating Temp: -40°C ~ +125°C

※Inductance drop = 10% type at IDC

SINLOON®

SINLOON®

小型繞線壓模式貼片電感
Range: 10nH ~ 33 μ H

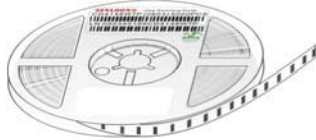
TYPE: NL252018 Series

SMD Wirewound Chip Molded Inductor

PACKING

Type	Size	Tape Reel Size	Quantity (ea)		
NL252018-01	2.5x2.0x1.8	178 mm	2,000/Reel	20K / Inner Box	120K / Carton
NL252018-02	2.5x2.0x1.8	178 mm	2,000/Reel	20K / Inner Box	120K / Carton
NL322522	3.2x2.5x2.2	178 mm	2,000/Reel	20K / Inner Box	120K / Carton
NL453232	4.5x3.2x3.2	178 mm	500/Reel	5K / Inner Box	30K / Carton
NL565050	5.6x5.0x4.0	330 mm	1000/Reel	3K / Inner Box	45K / Carton

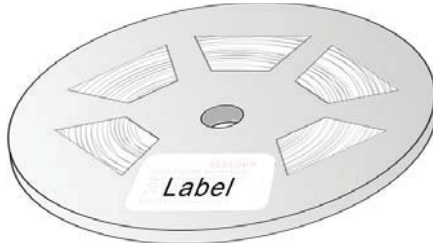
Tape Reel



178mm



Inner Box



330mm



Carton Pack

SINLOON®

※美隆公司產品規格及其特性參數的改變或更新恕不另行通知。

※Mayloon characteristic parameters of electronic product specification changes or updates without notice to improve。

