

方形平板燈系列 LED Panel Lighting

SINLOON

超薄節能導光燈

Ultra-thin energy saving light guide light

CT-F601221-13 (60W/4800lm)

產品特點:

光源: LED SMD5630/4014 CHIP DIODE

外型尺寸: 超薄設計 10.9mm.

電源: 市電(寬壓) 外置恆流電源.

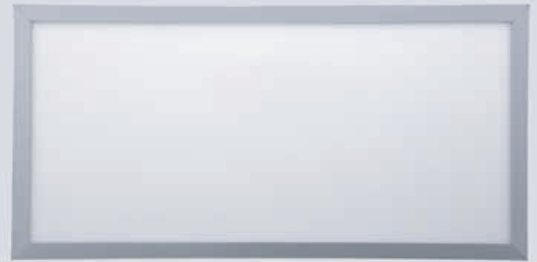
導光面板: 專利導光透鏡, 節能 >60%.

安裝: 可替代相同規格的天花板燈, 安裝容易安全.

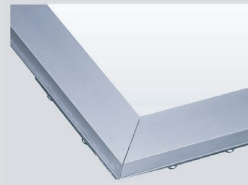
外框採用銀灰色金屬鋁質, 有圓角或直角可供選擇,
外置高功率高效恆流電源, 瞬間啟動, 無頻閃, 具備認證.

應用場所:

廣泛應於商場店舖, 酒店, 展廳, 商場走廊等地方.

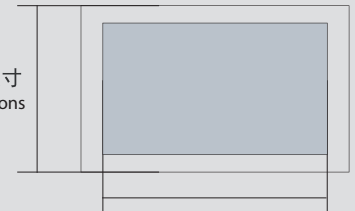


#6012

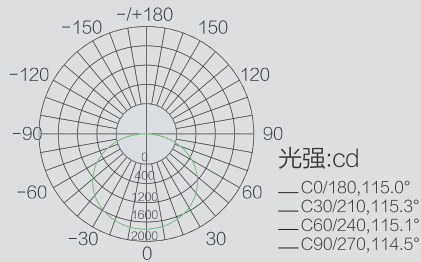


Silver-gray Aluminum frame

外形尺寸
Dimensions



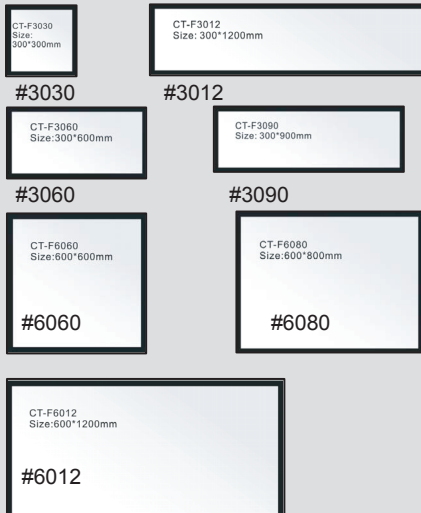
發光尺寸
The Emitting Size



平均光束角 (50%) : 115.0°

不同尺寸比較

Comparison of different size:



Characteristic Parameters:

型號 Model:	CT-F601221-13
尺寸 Dimension (L*W*H):	595*1195*10.9mm
發光尺寸 The Emitting Size:	557*1157mm
輸入電壓 Input Voltage (High efficiency):	AC110V~240V 50/60Hz
輸出電壓 Output Voltage:	35.2V/42V DC
電流 Current:	1.5A/1.2A
類型 LED Type:	SMD-5630/4014
數量 LED Quantity:	132pcs/280pcs
功率 System Power (W):	60W ±5%
光通亮 LED Flux (lm):	4800lm ±5% (80lm/W)
燈具效率 Lighting Factor:	75%
色溫 Color Temperature (K)	3000K ±7%; 6500K ±8%
顯色指數 Color Rendering Index:	>82
發光角度 Illumination Angle:	120°
壽命 Lifespan:	50000hrs
環境溫度 Ambient Temperature (°C):	-20°C ~ 50°C
重量 Weight (Kg):	<8.0/kg
認證 Certificate:	BSMI, CE, RoHS, FCC.

*If you have any question which is ont in this specification, please contact us. (在本規格書裡如果您未能找到或參數指標未能達到你的應用要求, 即未在本規格書裡表現出來, 請與我們聯絡)