

SINLOON®

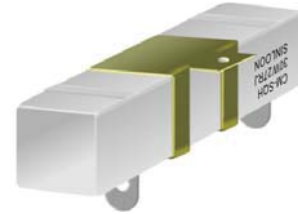
水泥電阻器(SQH)系列
POWER RANGE: 10W~40W

CM-SQH TYPE
CEMENT FIXED RESISTOR

FEATURE

- Exceptionally small and sturdy, mechanically safe, Excellent electrical characteristic
- Tolerance of $\pm 5\%$ and $\pm 10\%$ are standard.
- Non-inductive type are available on request.
- Heat and flame resistance
- The materials used and the construction techniques ensure excellent flame resistance, arc resistance and moisture resistance as well as self-extinguishing capabilities, They will withstand the most rigorous loading test.
- As resistors in radio and television receiver, The hazardous conditions of smoking and reheat can be completely prevented by the proper choice of power resistors.
- For high resistance value, The winding core will be replaced by metal oxide film core (RS Type)
- Applicable specifications: EIA RS-344 and EIA RC-649

FIGURE



ORDERING INFORMATION

Example: CM-SQH10W33R0J (5W 33R $\pm 5\%$)

Type	Power	Resistance (Ω)	Tolerance
CM-SQH	10W	0.1R = R100	H = $\pm 3\%$
	15W	1R00 = 1R00	J = $\pm 5\%$
	20W	10R0 = 10R0	K = $\pm 10\%$
	30W	100R = 101	
	40W	1K = 102	
		10K = 103	



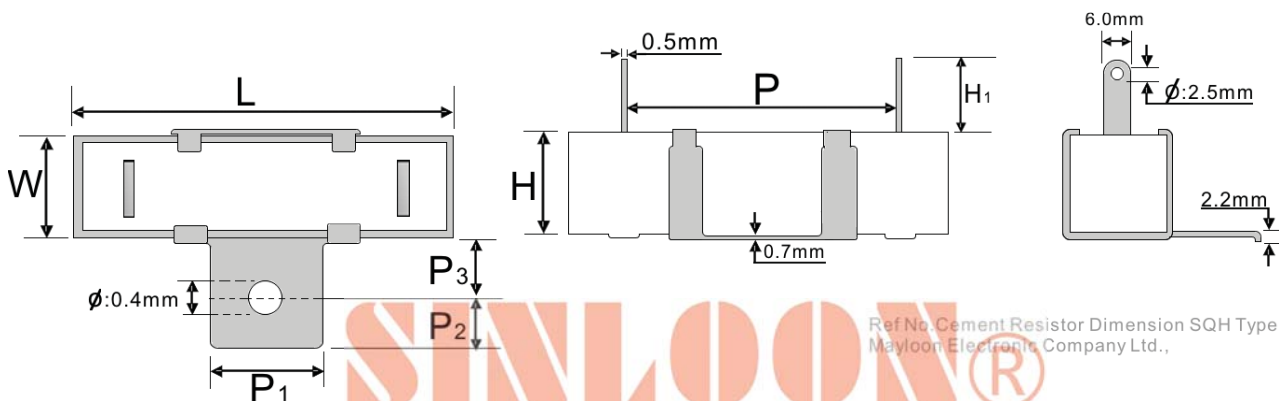
DIMENSION

Type	Dimension (mm)							
	L ± 2.0	H ± 1.0	W ± 1.0	P ± 1.0	P ₁ ± 1.0	P ₂ ± 1.0	P ₃ ± 1.0	H ₁ ± 2.0
10W	48.0	10.0	10.0	33.0	12.0	6.0	8.0	9.0
15W	48.0	12.5	12.5	33.0	12.0	6.0	8.0	9.0
20W	63.5	12.5	12.5	42.0	12.0	6.0	8.0	12.5
30W	75.0	19.0	18.0	56.0	17.0	8.0	10.0	12.5
40W	90.0	19.0	18.0	68.0	17.0	8.0	10.0	12.5

* 1: Metal Oxide

⊙ Resistance Range for standard resistance, Below of over this resistance request.

⊙ Non-inductive type up 50 Ω only.



Ref No. Cement Resistor Dimension SQH Type
Mayloon Electronic Company Ltd.,



SINLOON®

水泥電阻器(SQH)系列
POWER RANGE: 10W~40W

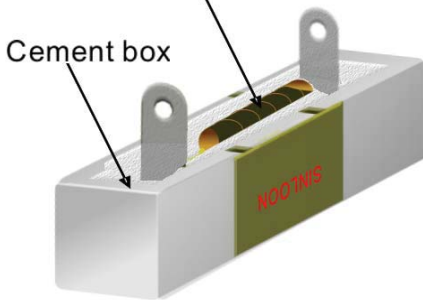
CM-SQH TYPE
CEMENT FIXED RESISTOR

DATA RATING

TYPE	Value Range (Ω)		Max working
	Wire Wound	Metal oxide	Voltage
10W	0.5 ~ 100R	100~50K	500V
15W	1R ~ 100R	100~150K	500V
20W	1R ~ 100R	100~150K	500V
30W	1R ~ 100R		1KV
40W	1R ~ 100R		1KV

PRODUCT STRUCTURE

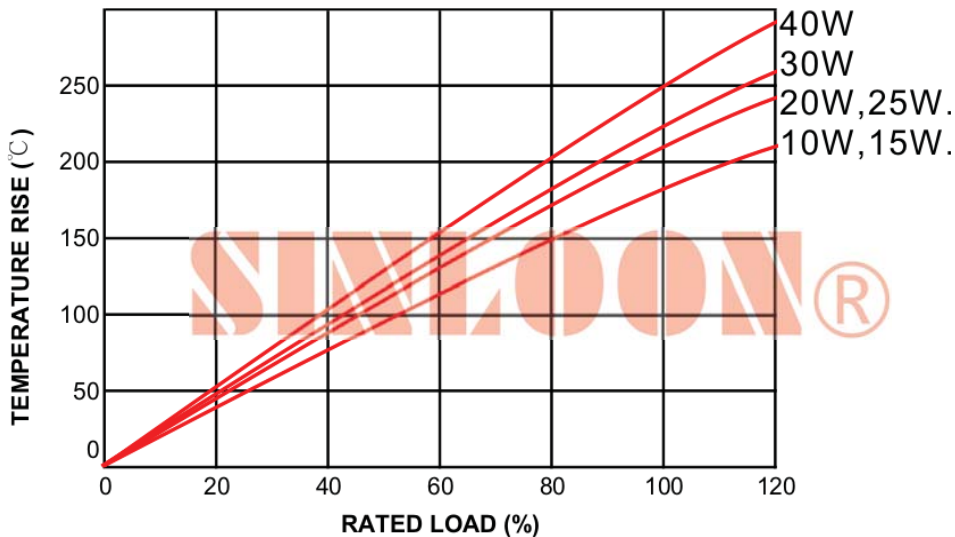
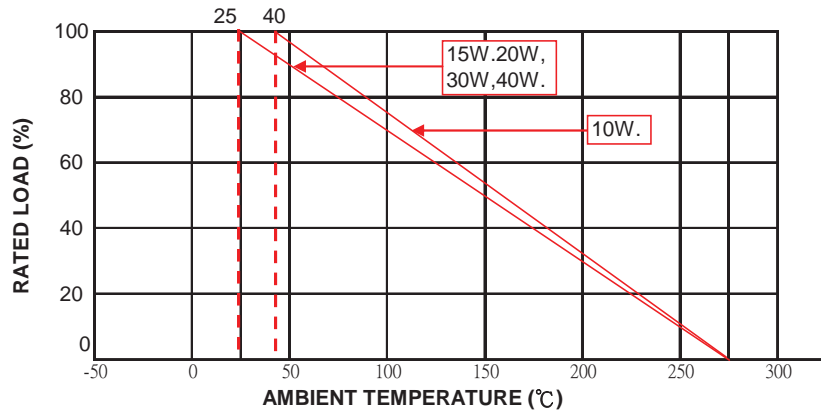
Inside Body:
Wirewound Resistor
Metal Oxide Resistor



ENVIRONMENTAL CHARACTERISTICS

PERFORMANCE TEST	APPRAISE
Short Time Overload	±2%+0.05Ω
Dielectric Withstanding Voltage	±2%+0.05Ω
Temperature Coefficient	MAX. 300ppm/oC
Insulation Resistance	≥ 100 MΩ
Solderability	95% min. coverage
Resistance to Solvent	no deterioration
Terminal Strength	2.5KG/24.5N
Pulse Overload	±2%+0.05Ω
Load Life in Humidity	±5%+0.05Ω
Load Life	±5%+0.05Ω
Temperature Cycling	±2%+0.05Ω
Soldering Heat	±2%+0.05Ω
Mositure resistance	±5%+0.05Ω
Shock and Vibration	±1%+0.05Ω
Effect of Soldering	±2%+0.05Ω

DERATING CURVE



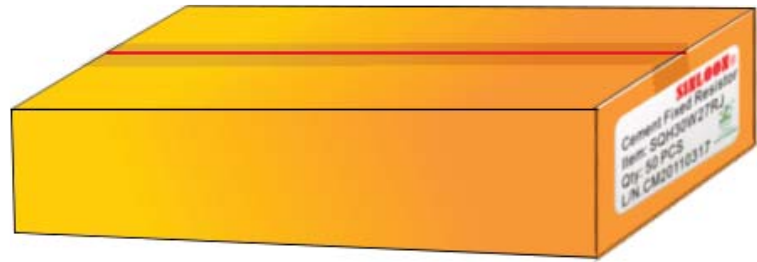
SINLOON®

水泥電阻器(SQH)系列
POWER RANGE: 10W~40W

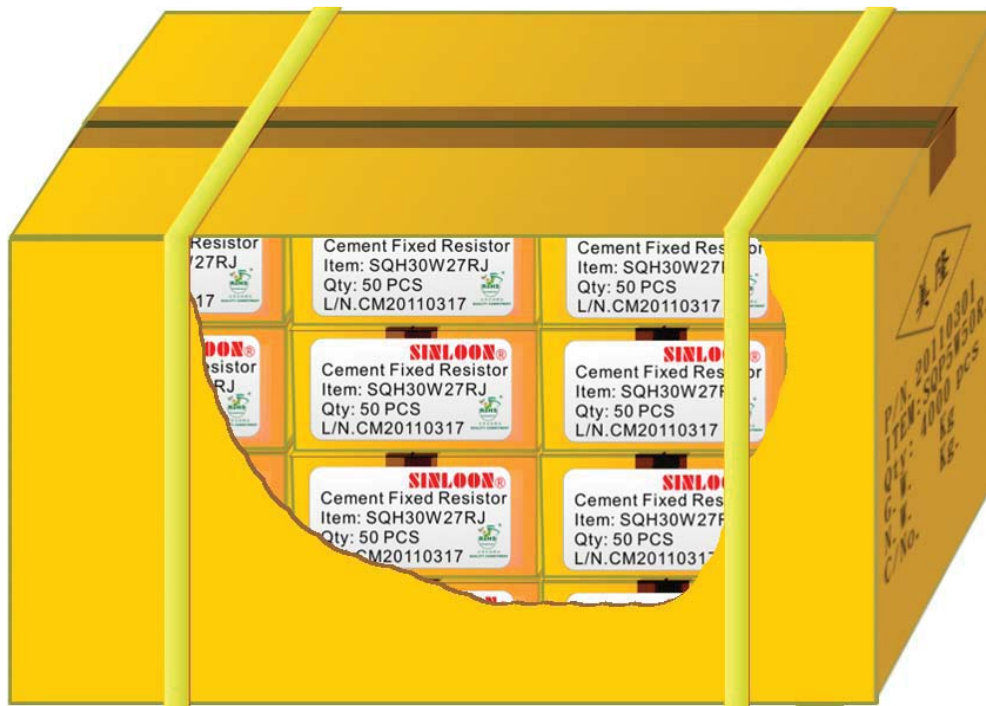
CM-SQH TYPE
CEMENT FIXED RESISTOR

□ PACKING

Inner Box Fig-1



Carton Fig-2



SINLOON®

※美隆電子產品規格特性參數的改變或更新,將不會另行通知。

※Mayloon characteristic parameters of electronic product specification changes or updates without prior notice.

