

**SINLOON®**

肖特基二極管  
Case: ITO-220

**SB1020FCT - SB10100FCT**  
**10A Dual Schottky Barrier Rectifier**

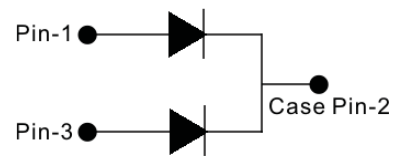
**Feature**

- ◆ Schottky Barrier Chip
- ◆ Guard Ring for Transient Protection
- ◆ Low Forward Voltage Drop
- ◆ Low Reverse leakage Current
- ◆ High Surge Current Capability
- ◆ Plastic Material has UL Flammability Classification 94V-0

**Mechanical Data**

- ◆ Case: ITO-220, Full Moldes Plastic
- ◆ Terminals: Plated Leads Solderable per MIL-STD-202, Method 208
- ◆ Polarity: See Diagram
- ◆ Weight: 2.24 grams (approx)
- ◆ Mounting Position: Any
- ◆ Mounting Torque: 11.5 cm·kg (10 in·lbs) max.
- ◆ Lead Free: For RoHS / Lead Free Version Add "-LF" Suffix to part Number.

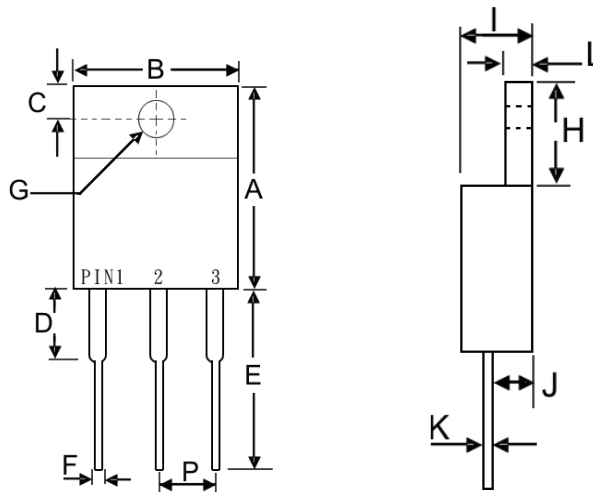
Figure



**Dimension**

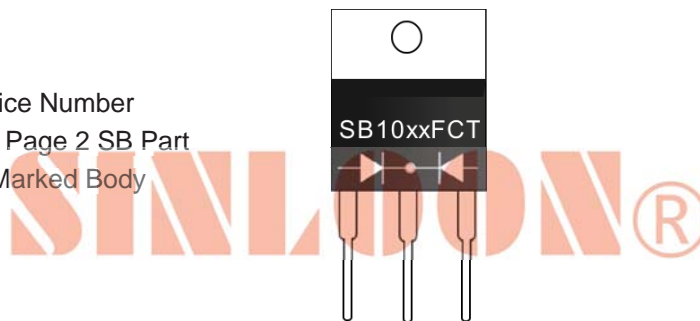
Case: ITO-220 (mm)

Dim.	Min.	Max.
A	14.6	15.4
B	9.7	10.3
C	2.55	2.85
D	2.7	3.3
E	13.0	13.8
F	0.5	0.75
G (Φ)	3.0	3.5
H	6.3	6.9
I	4.2	4.8
J	2.5	2.9
K	0.5	0.75
L	2.7	3.15
P	2.29	2.79



**Marking Information**

- SB10xxFCT = Device Number
- xx = See Page 2 SB Part
- Polarity = As Marked Body



□ **Maximum Ratings and Electrical Characteristics @ $T_A=25^\circ\text{C}$  unless otherwise specified**

Single Phase, half wave, 60Hz, resistive or inductive load For capacitive load, derate current by 20%.

Characteristics	Symbol	SB	SB	SB	SB	SB	SB	SB	SB	Unit
		1020FCT	1030FCT	1040FCT	1045FCT	1050FCT	1060FCT	1080FCT	10100FCT	
Peak Repetitive Reverse Voltage	$V_{RRM}$									V
Working Peak Reverse Voltage	$V_{RWM}$	20	30	40	45	50	60	80	100	
DC Blocking Voltage	$V_R$									
RMS Reverse Voltage	$V_{R(RMS)}$	14	21	28	32	35	42	56	70	V
Average Rectified Output Current @ $T_C=95^\circ\text{C}$	$I_O$	10			10			10		A
Non-Repetitive Peak Forward Surge Current 8.3ms Single half sine-wave superimposed on rated load (JEDEC)	$I_{FSM}$	150			150			150		A
Forward Voltage @ $I_F=5.0\text{A}$	$V_{FM}$	0.55	0.55	0.55	0.55	0.75	0.75	0.85	0.85	V
Peak Reverse Current @ $T_A=25^\circ\text{C}$	$I_{RM}$	0.5								mA
At Rated DC Blocking Vol. @ $T_A=100^\circ\text{C}$		50								
Typical Junction Capacitance (Note 1)	$C_j$	700								pF
Operating and Storage Temperature Range	$T_j, T_{STG}$	-65 to +150								$^\circ\text{C}$

Note 1: Measured at 1.0 MHz and applied reverse voltage of 4.0V D.C.

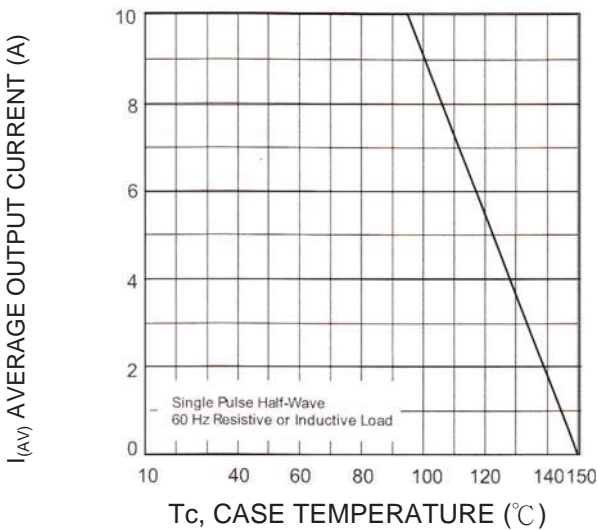


Fig-1 Forward and Current Derating Curve

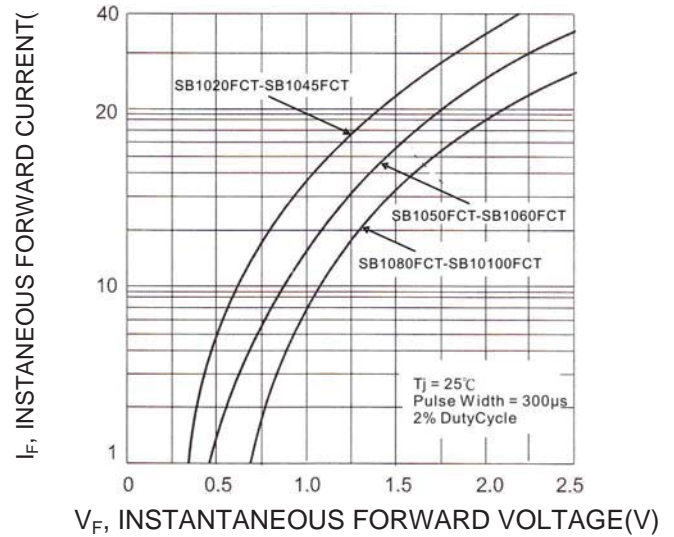


Fig-2 Typical Forward Characteristics

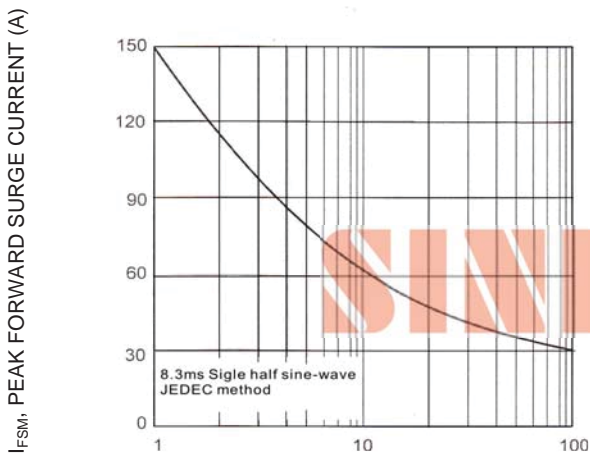


Fig-3 Maximum Non-Repetitive Peak FWD Surge Current

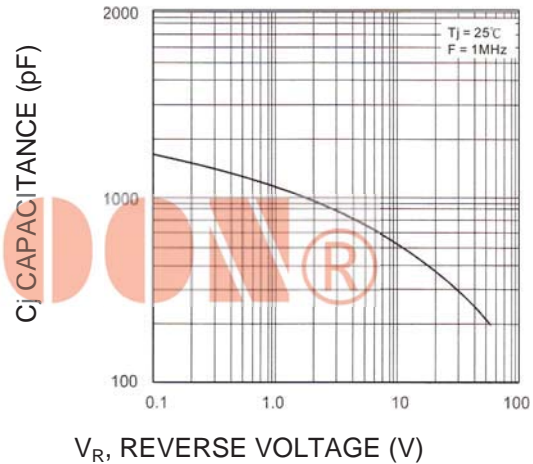


Fig-4 Typical Junction Capacitance

**SINLOON®**

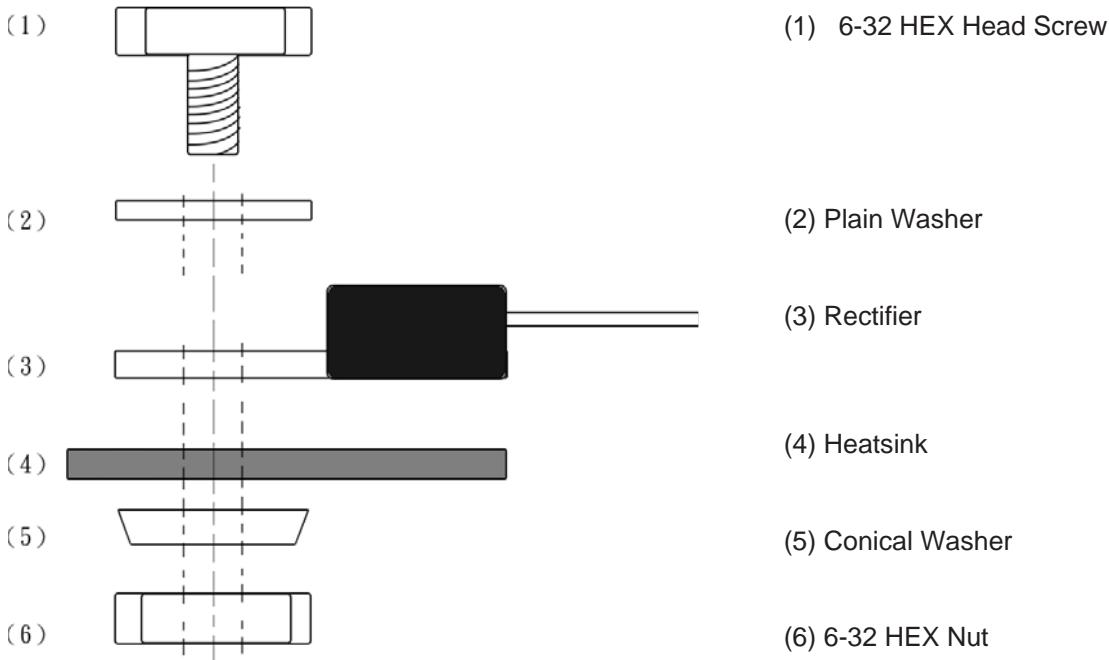
肖特基二極管  
Case: ITO-220

**SB1020FCT - SB10100FCT**  
**10A Dual Schottky Barrier Rectifier**

**Packaging Information**

Tube Size LxWxH (mm)	Quantity (Pcs)	Inner Box Size LxWxH (mm)	Quantity (Pcs)	Carton Size LxWxH (mm)	Quantity (Pcs)	Gross Weight
525 x 31 x 6	50	555x145x95	2000	572x306x218	8000	19.0kg

**Recommend Screw Mount Arrangement**



◆ The full molded plastic package affords a major reduction of hardware as compared to a standard TO-220 package. However, precaution should be made in mounting procedure.

◆ A conical washer should be used to apply proper force to the device. Screw should not be tightened with any type of air-forced torque or equipment that may cause crack on device package.

◆ A layer of thermal grease or thermal pad in the interface will be considerably helpful for heat dissipation.

**SINLOON®**

※美隆公司產品規格及其特性參數的改變或更新恕不另行通知。

※Mayloon characteristic parameters of electronic product specification changes or updates without notice to improve.

