



肖特基穩壓二極管

**GS1A - GS1M (50V~1000V)**  
**1.0A SURFACE MOUNT STANDARD DIODE**

**Feature**

- ◆ Glass Passivated Die Construction
- ◆ Ideally Suited for Automatic Assembly
- ◆ Low Forward Voltage Drop
- ◆ Surge Overload Rating to 30A Peak
- ◆ Low Power Loss,
- ◆ Built-in Strain Relief
- ◆ Plastic Case Material has UL Flammability Classification Rating 94v

Figure Case SMA/DO-214AC



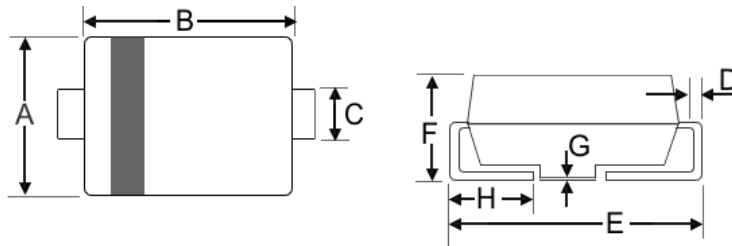
**Mechanical Data**

- ◆ Case: SMA/DO-214AC, Moldes Plastic
- ◆ Terminals: Solder Plated, Solderable per MIL-STD-750, Method 2026.
- ◆ Polarity: Cathode Band or Cathode Notch
- ◆ Weight: 0.064 grams (approx)
- ◆ Mounting : Type Number
- ◆ Lead Free: For **RoHS** / Lead Free Version Add "-LF" Suffix to part Number.

**Dimension**

Case: SMA/DO-214AC (mm)

Dim	Min	Max
A	2.5	2.9
B	4.0	4.6
C	1.2	1.6
D	0.152	0.305
E	4.8	5.28
F	2.0	2.44
G	0.051	0.203
H	0.76	1.52

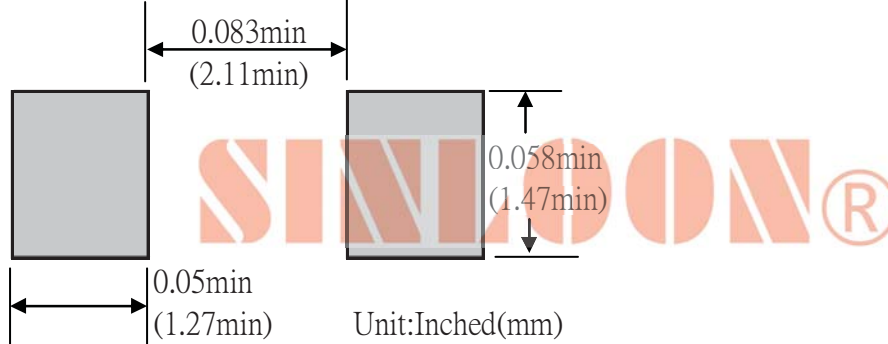


**Marking Information**

- Cathode = Polarity Band
- GSxx = Device Number
- xx = See Page 2
- Polarity = As Marked Body



**Recommended Footprint**



□ **Maximum Ratings and Electrical Characteristics** @ $T_A=25^\circ\text{C}$  unless otherwise specified

Characteristics	Symbol	GS	GS	GS	GS	GS	GS	GS	Unit
		1A	1B	1D	1G	1J	1K	1M	
Peak Repetitive Reverse Voltage	$V_{RRM}$	50	100	200	400	600	800	1000	V
Working Peak Reverse Voltage	$V_{RWM}$								
DC Blocking Voltage	$V_R$								
RMS Reverse Voltage	$V_{R(RMS)}$	35	70	140	280	420	560	700	V
Average Rectified Output Current @ $T_L=100^\circ\text{C}$	$I_O$	1.0		1.0		1.0			A
Non-Repetitive Peak Forward Surge Current 8.3ms Single half sine-wave superimposed on rated load (JEDEC Method)	$I_{FSM}$	30		30		30			A
Forward Voltage @ $I_F=1.0\text{A}$	$V_{FM}$	1.1		1.1		1.1			V
Peak Reverse Current @ $T_A = 25^\circ\text{C}$	$I_{RM}$	5.0		5.0		5.0			mA
At Rated DC Blocking Voltage @ $T_A=125^\circ\text{C}$		200		200		200			
Reverse Recovery Time ( Note 1)	$T_{rr}$	2.5		2.5		2.5			$^\circ\text{C}/\text{W}$
Typical Junction Capacitance (Note 2)	$C_j$	15		15		15			pF
Typical Thermal Resistance (Note 3)	$R_{\theta JL}$	30		30		30			$^\circ\text{C}/\text{W}$
Operating Temperature Range	$T_j$	-65 to +125							$^\circ\text{C}$
Storage Temperature Range	$T_{STG}$								

- Note :
- 1). Measured with  $I_F = 0.5\text{A}$ ,  $I_R = 1.0\text{A}$ ,  $I_{rr} = 0.25\text{A}$
  - 2). Measured at 1.0 MHz and Applied reverse voltage of 4.0 VDC
  - 3). Mounted on P.C. Board with  $8.0\text{mm}^2$  land area.

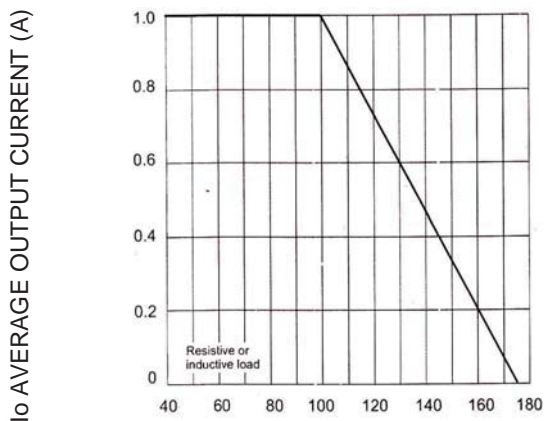


Fig-1 Forward and Current Derating Curve

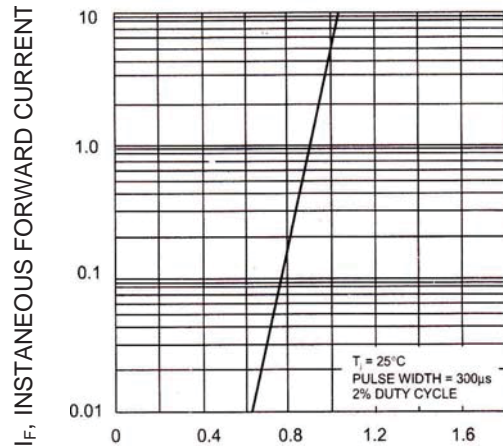


Fig-2 Typical Forward Voltage Characteristics

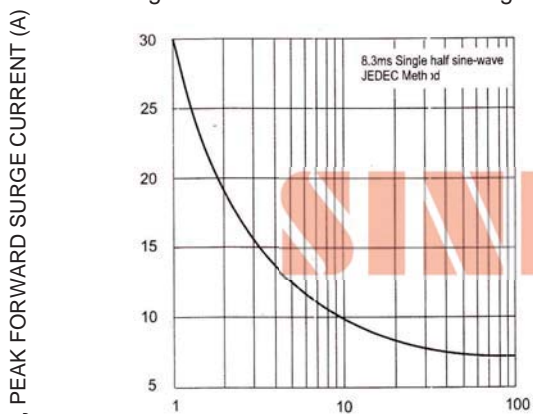


Fig-3 Max Non-Repetitive Peak Forward Surge Current

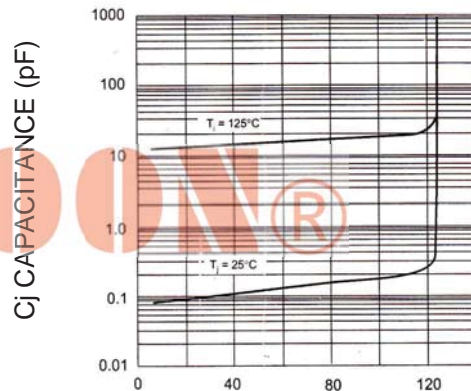


Fig-4 Typical Junction Capacitance

**SINLOON®**

肖特基穩壓二極管

**GS1A - GS1M (50V~1000V)**

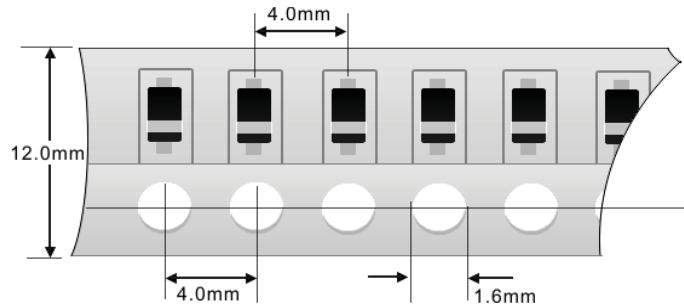
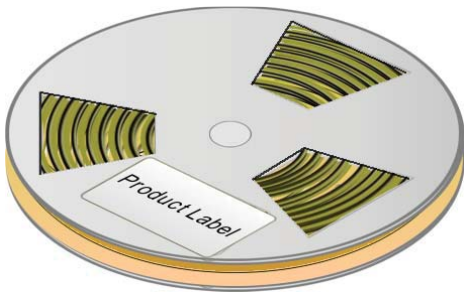
**1.0A SURFACE MOUNT STANDARD DIODE**

**Packaging Information**

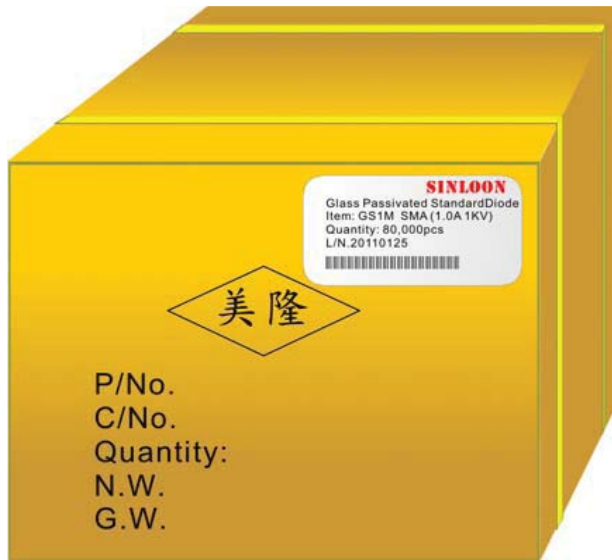
Dimension Reel Tape	Quantity (Pcs)	Inner Box Size L x W x H	Quantity (Pcs)	Carton Size L x W x H	Quantity (Pcs)	Gross Weight
330 mm	5,000	340 x 337 x 45 mm	10,000	370 x 370 x 420 mm	80,000	14Kg

Note: 1. Paper Reel, White or gray color.  
2. Components are packed in accordance with EIA standard 481- and 481-2

Tape Reel 330 x 12mm



Carton:



**SINLOON®**

※美隆公司產品規格及其特性參數的改變或更新恕不另行通知。

※Mayloon characteristic parameters of electronic product specification changes or updates without notice to improve

